

ARCMAN

C O R P O R A T I O N

The world's only antique electric meter lamps!



*Bringing the
past to light*

S I N C E 1 9 7 4

www.ClassicMeters.com

ARCMAN

C O R P O R A T I O N

The world's only antique electric meter lamps!

Welcome to your personal copy of "Electrical Reflections", a catalog unlike any other.

First-time visitors are in for a pleasant surprise. As you explore your catalog, you'll discover that creative, unique product designs, unparalleled quality, value, customer service and pride in old-fashioned hand craftsmanship are united hallmarks of our business philosophy.

Each time a personally-engraved, original electrical restoration departs our workshop, someone is destined to acquire a unique addition to their home or office. Every hand-restored instrument is imbued with electrical history. No two are exactly alike, and each old-technology artifact is individually signed by the skilled artisan who crafted it.

If you represent an energy-related enterprise and are searching for the perfect personnel award or field-related gift, you have truly arrived. The beautifully-restored antique electric meters incorporated into our products have contributed 50...60...or even 80 years or more of diligent, unwavering service to the industry . . . a most appropriate tribute to a deserving recipient.

When admired by others, our products' electrical origin quietly, yet dramatically speaks for itself . . . and for the giver's thoughtfulness. We hear time and again that no other gift is as uniquely valued and treasured as the years pass. With their working jeweled movements, our personally-engraved, early-technology electric meter lamps are often accorded status as family heirlooms to be passed down as a special remembrance to future generations.

As always, we offer complimentary personalized engraving, a next-day delivery option on small orders, very reasonable workshop-direct prices, and a generous, ironclad warranty unmatched anywhere else.

Please feel free to call us at 1-800-731-6229 or e-mail me at Jim@ClassicMeters.com with any questions you may have, or to check product availability for an expedited requirement.

We're very pleased to serve you.

Sincerely,



Jim Sovaiiko
Founder and President

Please be sure to visit our website for updates.

www.ClassicMeters.com





Page 05



Page 06



Page 09

Bringing the past to light

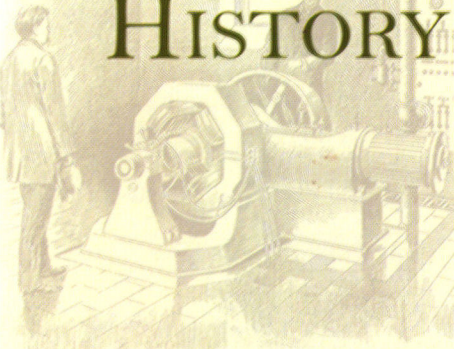
- Our Company History 2
- The Edison 3
- The Heritage 4
- The Ambassador 5
- The Metropolitan 6
- The Roosevelt 7
- The Legacy 7
- The Manhattan 8
- The Fifth Avenue 9
- “Tiffany Style” Shade Selections 10
- The Fifth Avenue Medallion 11
- Power Plaques 12
- History of the Electric Meter 13
- Product Features & Specifications 13
- Frequently Asked Questions 14
- Ordering Information 15
- Warranty 17

Catalog designed in cooperation with the
Northeastern Pennsylvania Industrial Resource Center, Fall 2006 revision.

H. N. Hartney, E. E.

A DYNAMO ROOM—WHAT IS A DIRECT-CONNECTED UNIT?
BELT CONNECTION—TILE FLOORING—DYNAMO CABLES

OUR COMPANY HISTORY



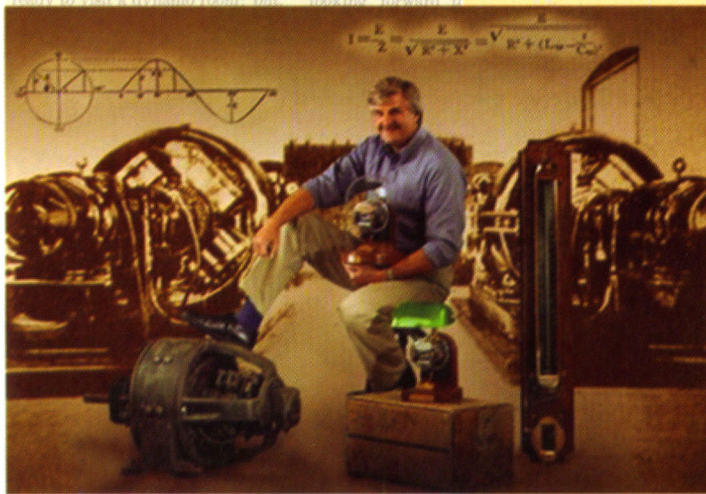
“Oh, young men, I suppose you are ready to visit a dynamo room; but we are quite ready to look forward to it.”

How did the Arcman Corporation get started?

If a single word were to summarize the company's origins, it would have to be “serendipity”. In 1972 Jim Sovaiko, the company's founder, happened upon a cache of antique electric meters languishing in a scrapyards. Sensing an entrepreneurial opportunity in the meters, Jim gathered some friends together to recount his find. Brainstorming, the group concluded that converting the meters into lamps would be an ideal application for the discovery. Over handshakes, Jim recruited two friends as business partners in the embryonic venture.

Troubles mounted rapidly, however. Restorable meter glass proved to be at a premium, as most meters had missing or damaged glass covers, and the partners' gamble that better glass would be uncovered hadn't paid off. Additional glass was damaged transporting the meters to storage, and to their further dismay, even the premium meter glass had deeply-etched discolorations that defied removal by any means. Without enough undamaged clear glass, there was little point in pursuing the endeavor. The tiny venture had run out of money, was in debt, and had seemingly reached its end. The partnership dissolved, but Jim decided nonetheless to press on with the original business model.

Consulting a glassworking engineer, Jim devised and built a unique meter glass polishing machine that not only solved the discoloration problem, but restored old glass to exceptional clarity. Borrowing funds from family, Jim hired a telephone canvasser, and after nearly 500 hours' investigative work, enough hidden old-tech meters were discovered nationwide to resurrect the enterprise. The meters were purchased and warehoused in nearby Scranton. A few prototype lamps were designed and built. A mailing piece was then prepared, marketing the lamps as specialized personnel awards, and mailed to a targeted list of electric utilities. Early orders proved there was a strong, unfilled demand for such one-of-a-kind electrical restorations. Jim then hired and trained his first employees to staff what is today the world's only antique electric meter restoration team!



“With the world's largest inventory of its type now in long term, protective storage and with many new product ideas underway, the Arcman Corporation has enough restoration and assembly work in the wings to last far beyond my lifetime. Ongoing customer support and great positive feedback are all top-shelf, giving us the incentive to strive for even greater excellence in what we do.”

All of the foregoing, of course, is merely a cursory, thumbnail sketch of how the business began. “Along with my original partners and family, any acknowledgment of essential entities is extensive and far beyond the scope of this text. Remove any one of them from the equation and this enterprise wouldn't exist today.”

For an expanded text, please visit our website and click “History”.



Arcman Corporation • 807 Center Street • Throop, PA 18512-1124 • 1-800-731-6229

*"It is even more beautiful
and special than we
anticipated. A perfect gift."*

- Charleston SC

The Edison

Antique Electric Meter Lamp with Operating Meter

Imagine your pride in either owning or presenting this Edison-era, glass-domed, solid walnut lamp incorporating an original, beautifully restored, generations-old, precision electrical instrument.

Snap on the line cord switch and watch with fascination as this oldentimes electrical instrument springs to life! The protective glass dome dust cover lifts from its felt-lined circular groove which is precision-machined into the heavy, polished walnut base. An economical, 15-watt reflector bulb draws its current through the meter circuit and bathes the slowly-rotating, sparkling meter mechanism and dome interior in a soft, warm glow.

Model OB-DO

Overall Height: 14 in. (35.56 cm)

Base: 9 1/2 in. (24.13 cm)

Net weight: 11 lbs.

Shipping Weight: 24 lbs.

Energy Req: 115V, 50/60 HZ AC

Energy consumption:

Bulb - 15 Watts

Meter 1.5 Watts

See enclosed order form
for pricing. Additional
information on page 13.



Reflector Detail



*"Simply magnificent!
I was unaware that
these unique lamps were
still available.
I retired after 48 years
in the industry and
I shall covet this
wonderful device."*

— Cookstown, Ontario

The Heritage

Antique Electric Meter Lamp with Operating Meter

Whether acquired for yourself or a special recipient, the Model OB-SH Antique Electric Meter Lamp will instantly become the center of attention wherever it is displayed. Brightly-polished, working meter components encased within the wingnut-affixed, crystal-clear meter cover glass lend a distinctive olden-days aura to this special restoration. It will be admired and appreciated by all. A three-way socket affords a selection of three lighting levels (with three corresponding meter recording speeds), making the Model OB-SH suitable for most general-purpose lighting applications.

Model OB-SH

Overall Height: 24 in. (61 cm)

Base: 9 1/2 in. (24.13 cm)

Net weight: 10 lbs.

Shipping Weight: 21 lbs.

Energy Req: 115V, 50/60 HZ AC

Energy consumption:

Bulb - Variable (3-way)

Meter 1.5 Watts

See enclosed order
form for pricing. Additional
information on page 13.



Socket Detail



The Ambassador

Antique Electric Meter Lamp with Operating Meter

From its highly-polished, solid brass 8" reflector to its heavy solid brass pull chain ball, the Model OB-BR Antique Electric Meter Lamp exudes uncommon quality and pride of craftsmanship throughout. Snap on either of its dual operating switches and transport yourself back to the early days of electricity as you watch the meter's slowly-rotating brass gears record the electricity consumed by the lamp's bulb. The bulb, in turn, lights up its own recording mechanism and bathes the immediate area in a soft, warm glow . . . a glow reminiscent of the kerosene lantern made obsolete when this same, original meter likely calculated some long ago homeowner's first electric bill.

Model OB-BR

Overall Height: 14 in. (35.56 cm)

Base: 7 in. sq. (17.78 cm)

Net weight: 11 lbs.

Shipping Weight: 24 lbs.

Energy Req: 115V, 50/60 HZ AC

Energy consumption:

Bulb - 40 Watts

Meter 1.5 Watts

See enclosed order form for pricing.
Additional information on page 13.



"The workmanship and personal touch that you incorporated into the meter lamp was outstanding. THANKS!!"

—Lincoln NE

The Metropolitan

Antique Electric Meter Lamp with Operating Meter

We've taken the original Westinghouse Electric Company meters (circa 1920) from this early period and incorporated their restoration into a banker-style lamp. As with our other OB-series products, we're very proud to offer these special creations to customers who will thrill at owning their own original piece of beautifully-restored, yet still operating early electrical technology.

Model OB-BA

Overall Height: 15 in. (38 cm)

Base: 7 in. sq. (17.78 cm)

Net weight: 10 lbs.

Shipping Weight: 24 lbs.

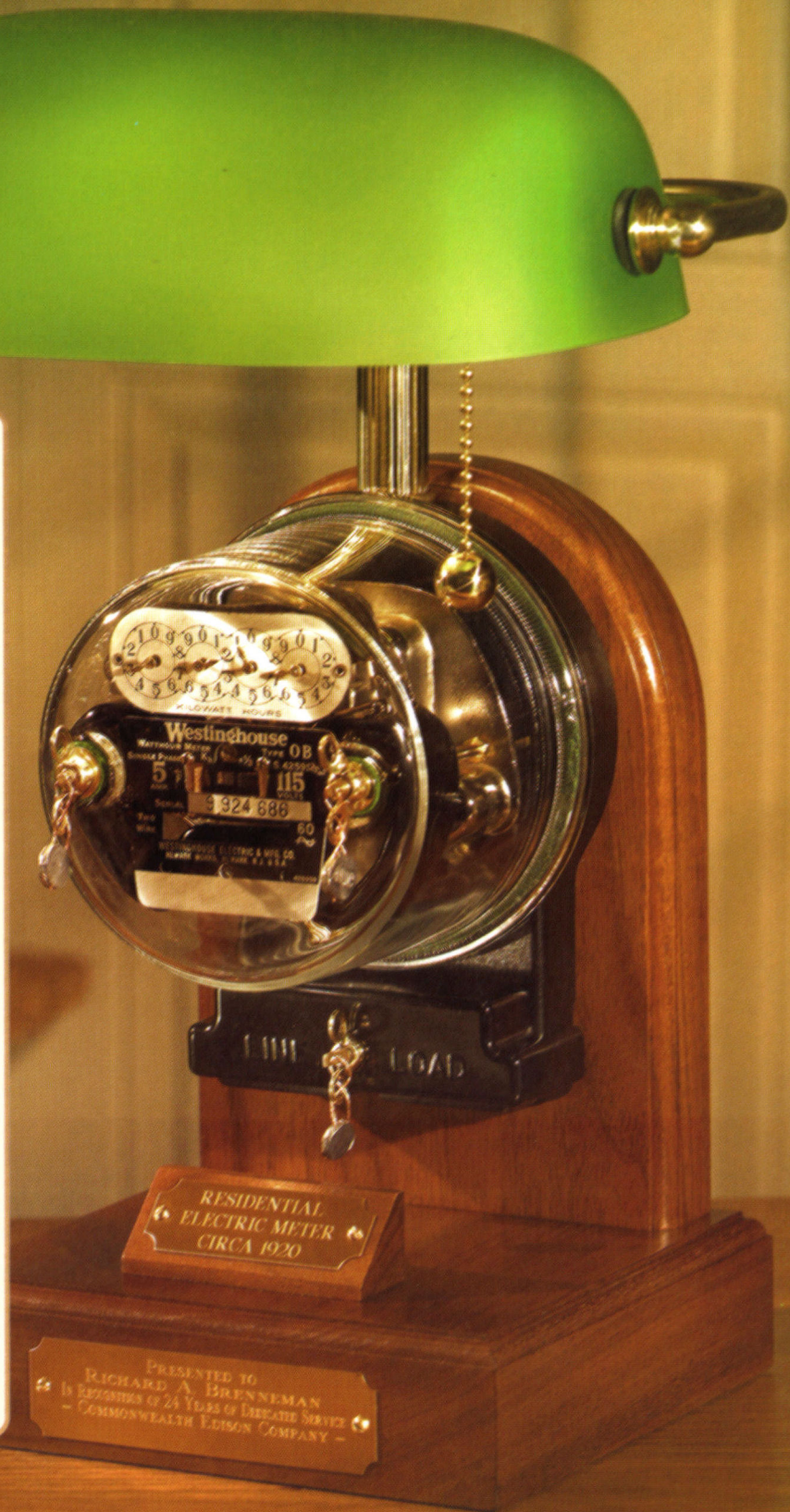
Energy Req: 115V, 50/60 HZ AC

Energy consumption:

Bulb - to 60 Watts Max

Meter 1.5 Watts

See enclosed order form for pricing.
Additional information on page 13.
See Page 14 for special antique light
bulb upgrade option.



Reflector Detail





The Roosevelt

Electric Meter Lamp with Operating Meter

We've relocated the residential electric meter from its customary location outside the home, extracted and refinished its interior recording mechanism, and incorporated it as the centerpiece of a practical, fully-functional lamp. Turn on your Model I-30 Electric Meter Lamp and, through the crystal-clear acrylic viewing dome, watch as the meter itself comes to life. As delicate, precision brass gears slowly rotate, the meter pointer dials will sequentially advance, providing an everchanging face to this unique memento of the electric power industry. A three-way bulb (not included) provides three lighting levels with three corresponding meter recording speeds. With its heavy, precision-cut, solid walnut woodwork, the Model I-30 Electric Meter Lamp has tremendous people-stopping power.

Model I-30

Overall Height: 22 in. (55.88 cm)

Base: 9 1/2 in. (24.13 cm)

Net weight: 10 lbs.

Shipping Weight: 14 lbs.

Energy Req: 115V, 50/60 HZ AC

Energy consumption:

Bulb - Variable (3-Way)

Meter 1.6 Watts



Socket Detail

*“Very unique.
Great conversation piece.
Fascinates everyone.”*

— Columbus NE

See enclosed
order form for pricing.



The Legacy

Antique Electric Meter Static Display Unit

The Model OB-SD Antique Electric Meter is restored to the same exacting cosmetic standards as our other models, but is otherwise beyond electromechanical restoration. Any responsible flaws are invisible. Accordingly, the Model OB-SD retains its museum-piece quality as a classic electrical instrument and a true surviving representative of the electric industry's early, formative years.

Model OB-SD

Overall Height: 10 in. (25.40 cm)

Base: 7 in. sq. (17.78 cm)

Net weight: 8 lbs.

Shipping Weight: 12 lbs.

Energy Req: N/A

Energy consumption: N/A

See enclosed order form for pricing.
Additional information on page 13.

The Manhattan

Antique Electric Meter Lamp with Operating Meter

You needn't be a banker to generate high interest in this special deluxe-edition banker-style lamp. This lamp features a heavy, premium-grade hand-blown, green glass reflector imported from Europe. Snap on its brass rotary switch and bathe your surroundings in up to 60 watts of antique-meter-supplied illumination, while setting into motion the OB meter's remarkable 32,400,000:1 precision brass gear ratio.

Model OB-BF

Overall Height: 15 in. (38 cm)

Base: 7 in. sq. (17.78 cm)

Net weight: 11 lbs.

Shipping Weight: 24 lbs.

Energy Req: 115V, 50/60 HZ AC

Energy consumption:

Bulb - 60 Watts max

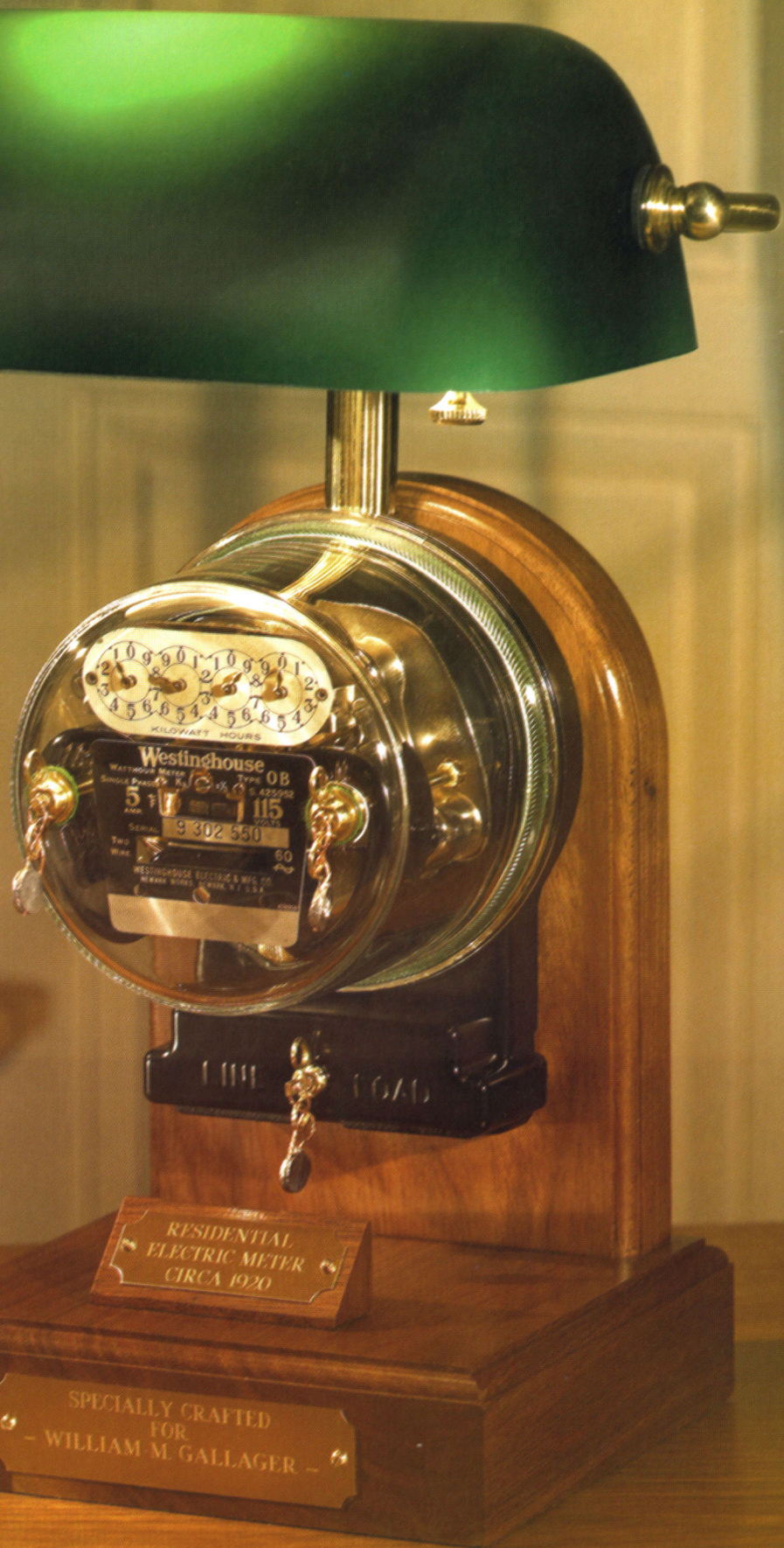
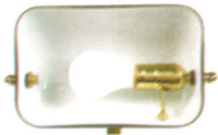
Meter 1.5 Watts

See enclosed order form for pricing.

Additional information on page 13.

Additional bulb information on page 14.

Reflector Detail



New! *Tiffany* Style Shades



The Fifth Avenue

Our Fifth Avenue Series represents the epitome of old electro-tech! Imagine the perfect combination of the 1920's meter, coupled with a '20's Tiffany-style desk lamp, and even a '20's early-tech light bulb! Yes, we located a manufacturer who makes nearly-exact bulb reproductions, right down to the large spiral filament and pointed tip. When lit, the spiral filament's distinct retro image is projected onto a variety of interchangeable glass panels. See the following pages to admire how the Fifth Avenue Series can be customized to one's personal style and taste.

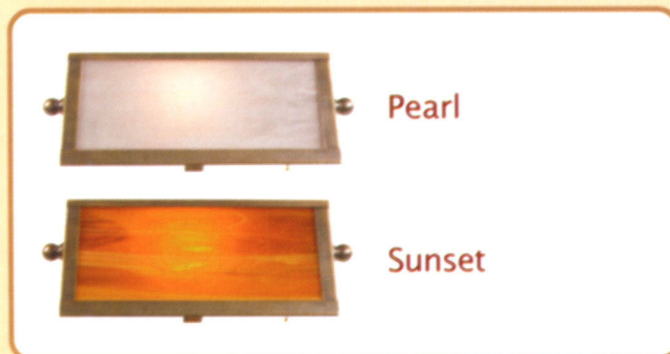
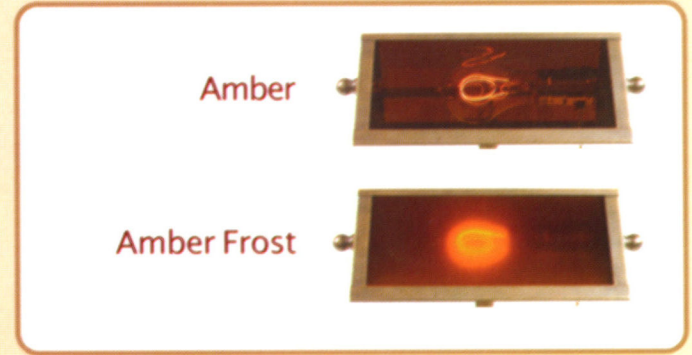
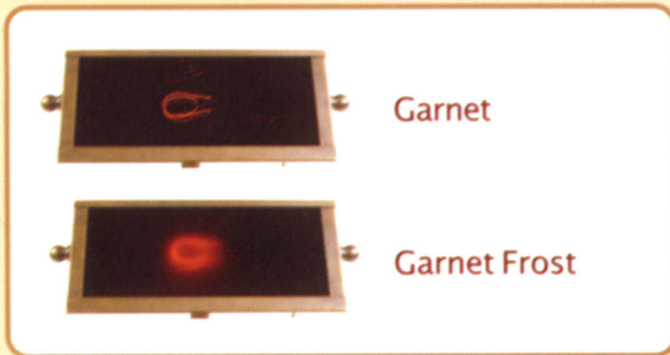
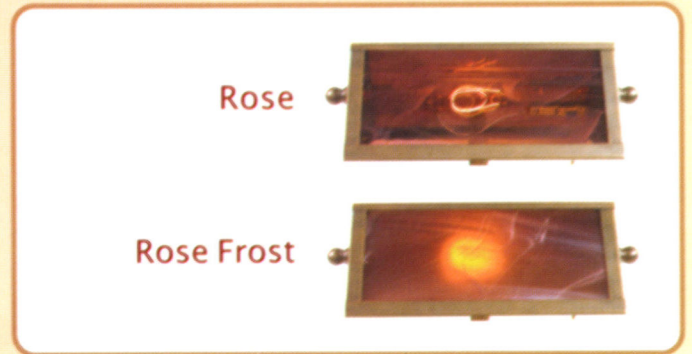
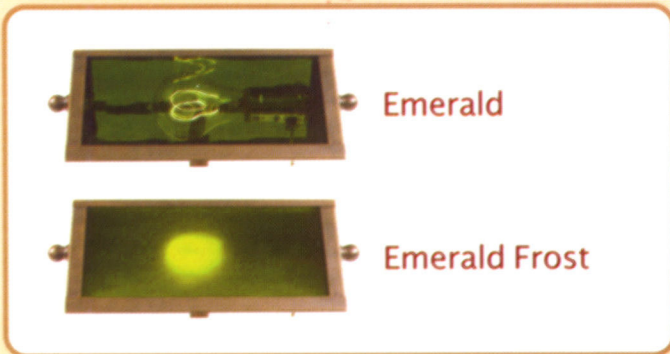
See enclosed order form for pricing.
Additional meter information on page 13.
Additional bulb information on page 14.



Victorian Edison style 25 watt bulb included with all Fifth Avenue lamps.

6 beautiful colors
and 2 styles to choose from!

Fifth Avenue Shade Options



Customize the look of your Fifth Avenue!

Not only can you select your favorite art glass shade option, but you can purchase additional, alternate glass panels to interchange as desired. Art glass panels simply slide and snap into place! There are two (a front and a rear) glass panels per shade.

Customize!



The Fifth Avenue Medallion

If you are looking for a unique, personalized gift like no other, then look no further!

The Fifth Avenue Medallion model, with its beautiful Tiffany-style shade, can additionally be customized with your logo or monogram, laser-engraved onto a central glass oval insert hand-leaded into the antique, solid brass frame. As you view it from different angles, portions of the antique bulb filament appear through your customized image! Truly an ultra-special keepsake that will be treasured for a lifetime. Please contact us for pricing and for the current lead time required to create your special masterpiece.



The Perfect Tribute



Arcman Corporation

Power Plaques

In your search for service awards for electrical personnel, you're not likely to find any more appropriate for the occasion than our custom-tailored Power Plaques. These solid walnut presentation awards incorporate various original electrical hardware items, including line insulators, brass terminal screws, and ACSR conductor segments. All are sourced from retired electrical installations. Our three types of glass line insulators are sliced vertically in half, ground flat at the profile, acid-cleaned, and then permanently affixed to your choice of plaque.

Plaque Model WP-110 (9" x 13") features polished brass perimeter trim screws and an engravable mirror-finish brass shield. When an insulator half is bonded to the reflective shield, a phantom image of the absent insulator half appears.

Plaque Model WP-210S (8" x 11") features polished brass trim screws with a bonded insulator half.

Plaque Model WP-210C (8" x 11") features two polished ACSR conductor segments attached to the walnut plaque by four brass mountings, along with a bonded insulator half.

Personally engraved with your sentiments, any of these special Power Plaques will, at first glance, make an eye-catching, distinctive statement about the recipient's chosen profession.

Choose your Insulator Style

Power Plaque buyers may select from any of the three insulators shown. Please note that, while the brown saddle-top insulator is a power delivery insulator, either the blue or clear insulator may be construed as a light branch line power-type or a telephone/telegraph-type. (You may want to research your particular utility's historical field application prior to insulator selection.) Indicate your choice on the Order Form insulator choice column with "BL" for blue, "CL" for clear, or "ST" for saddle-top. Please note that saddle-top insulator shapes and colors may vary from that shown.

Engraving Information

There is no charge for personalized engraving. Each Power Plaque has a six-line limit and a capacity per line of 55 characters and spaces. Punctuation (parentheses, hyphens, commas, etc.) counts as one space. Please type or carefully print each inscription, indicating whether in all upper-case letters, or a combination of upper- and lower-case letters.

One suggested engraving format would be:

Presented to
JOHN P. JONES
In Recognition of 3 Years of Dedicated Service
- Consolidated Edison Company -
2005-2008

Please feel free to ask us any engraving questions you may have. Our engravers have years of experience and would be pleased to offer advice on layout. Please call weekdays at 1-800-731-6229 between 8 AM and 5 PM Eastern time.

Our computerized engraving process can economically reproduce corporate logos on your Power Plaque. Please inquire for details.

Questions?

Call us at 1-800-731-6229

General Information

HISTORY OF THE ELECTRIC METER

Shortly after the turn of the century, many American homes were still lit by dim kerosene lamps. When the first electric wires were strung out to these homes, the installing electrician ran single-conductor, asphalt-insulated wires. "State-of-the-art" back then comprised ceramic "knob-and-tube" insulator fittings, and the hand-cranked "brace-and-bit" was a mainstay electricians tool. Oftentimes, only one electrical outlet per room was allowed, and this was usually used for lighting purposes. Along came the electric company's wooden-spoke-wheeled truck, a curious little electric meter was installed, and one more American household came to marvel at the burgeoning "Age of Electricity".

The Westinghouse Electric Company type OB watt-hour meter was widely installed by electric utilities in the early 1900's to record residential electric use. In all likelihood, an olden-days startup utility used this same meter to calculate the first electric bill tendered to a pioneering energy consumer at the very dawn of the electric age!

In restoring each meter, our skilled craftsmen carefully removed nearly 80 years' accumulation of corrosion, tarnish and grime to reveal the long concealed, natural metallic lustre of solid yellow machined brass, heavy red cast brass, and bright nickel plate. Brass meter components are brilliantly polished and then immediately sealed in clear metal lacquer to preserve the hard-won finish. Professional metering engineers with whom we've consulted confirm that this refinished instrument should operate smoothly for generations more to come, thus assuring an heirloom-quality restoration piece for the owner. With the added final touch of personalized engraving, you couldn't imagine a finer presentation piece in its category.

UNIVERSAL PRODUCT FEATURES AND SPECIFICATIONS

- Restored antique instrument is a Westinghouse Electric Mfg. Co. type OB watt-hour meter, patented 1911-1919.
- Jeweled electromechanical movement for long operating life.
- Each OB meter has a remarkable 32,400,000:1 precision brass gear ratio!
- Can also be operated by means of a second line cord on/off switch.
- Optically-polished meter cover glass removes a lifetime's accumulation of scratches, haze, and embedded mineral stains, providing exceptional clarity for viewing the internal meter recording mechanism.
- Wedge-mounted brass plate is informatively engraved "Residential Electric Meter, Circa 1920".
- Polished and lacquered original solid brass meter fittings.
- Totally-enclosed, maintenance-free meter recording mechanism.
- May be ordered without personalized brass plate.
- Polished solid brass bulb socket.
- Included are three copper-wire, pressed-lead wingnut security seals, just like the olden-days metermen installed to thwart tampering. Seals are permanently encapsulated in clear metal lacquer to prevent oxidation.
- Polished solid brass dial pointers.
- The meter manufacturer's original data plate, displaying an individually-stamped meter serial number, is clearly visible through the front meter glass.
- Partly degaussed meter brake magnet provides additional meter animation.
- Precision-cut, heavy solid walnut woodwork.
- Proudly crafted in the USA.
- Safe for use around computers and magnetic storage media.
- No two meters are exactly alike.
- Each restoration is signed beneath the base by the assembling skilled craftsman.
- Information folder included.
- Full product warranty covers both buyer and recipient.



Frequently asked questions

WHY ARE OLD ELECTRIC METERS SO SPECIAL?

Early electric meters are ideal subjects for preservation and restoration because (1) they represent the very dawn of the electrical age, reflecting a time when electric light bulbs were a new technology, replacing lanterns and gaslights for illumination, (2) they are small and lightweight, (3) they contain generous amounts of brass and bronze which can be polished to a high luster to greatly enhance their aesthetics, (4) they are a "natural" for use in combination with an electric desk or table lamp, as they can be made to operate in conjunction with lamp use, (5) their operational activity is readily observed through clear glass protective enclosures, and (6) they are engineered to operate for decades, as they employ precision jeweled mechanical movements for their most active moving parts.

HOW LARGE IS YOUR METERS INVENTORY?

We believe it is the world's largest, and meters are still being added. We've preserved meters from the late 1800's to the 1940's, nothing newer, and we have enough on hand to keep us actively restoring and supplying you, our customer, for decades to come.

DO YOU WHOLESALE YOUR PRODUCTS TO RESELLERS?

No, all sales are direct as of this writing.

ARE YOUR PRODUCTS MADE IN THE USA?

Yes. All of the meters we restore were originally built in the United States and were retrieved by us from domestic locations. Certain product components, though, must be imported, as there are no longer any domestic suppliers available. All restoration work is performed in our Pennsylvania workshops by U.S. citizens.

WHO ARE YOUR PRIMARY CUSTOMERS?

Electric utilities, electrical engineering and contracting firms, corporate utility departments, cogeneration plants, electrical manufacturers, federal, state, and local agencies, financial and educational institutions, research laboratories, oil companies, and a broad variety of energy-related enterprises.

DO YOU SELL TO INDIVIDUAL PRIVATE BUYERS?

Absolutely. We treat each and every customer equally, even a one-time, one-item private buyer.

DO YOU EXPORT?

Apart from our longstanding sales activity throughout Canada, we regretfully and respectfully must decline all other export inquiries as of this writing.

HOW ARE YOUR PRODUCTS PACKAGED FOR SHIPMENT?

Products are very carefully packed with appropriate cushioning. We don't use Styrofoam "peanuts" or shredded newspaper out of consideration for our customers' unpacking experience. Our shipping damage experience rate is below 1%.

DO YOU PERFORM CUSTOM WORK?

We would consider collaborating on a customer-generated idea, provided the work falls within our workshop capabilities and time availability. Contact us with your idea. All ideas submitted, however, become the property of Arcman Corporation unless other provisions are made.

WE HAVE AN OLD METER IDENTICAL TO THE ONES YOU RESTORE. WILL YOU ACCEPT IT AS CREDIT ON A PURCHASE?

We're sorry, but for a laundry list of reasons we must decline the offer. If your meter has a special ID tag which can be transferred to one of ours, though, this might be an alternative choice.

DO YOU OFFER VISITOR TOURS?

Yes, if you are in the northeastern Pennsylvania area, we will be glad to show you around, provided you contact us beforehand to schedule a date and time. We're always happy to talk shop, but are not yet set up for drop-in visitors.

WHAT ELSE DOES ARCMAN DO?

We are a contract manufacturer for energy-saving light bulb demonstrators which employ watt-hour meters as a comparative instructional tool. We're also involved in developing internally-generated invention ideas in the commercial and industrial sectors.

WHAT TYPE OF LIGHT BULB SHOULD I USE?

About our reproduction antique light bulbs:

These special bulbs are faithful replicas of the 25-watt Antique Victorian Style Light Bulb, commonly found in use during the 1920's. These bulbs have a 3,000 hour life. Please note that bulb wattage is not indicative of actual light output, which is somewhat lower. These are nostalgic light bulbs reproduced to create nostalgic, low-level ambiance.

Antique bulbs are included with all Fifth Avenue and Fifth Avenue Medallion series products. Antique bulbs may be ordered for optional use with The Metropolitan and The Manhattan models, but are not suitable for other model lamps in our catalog. Please note that if an antique bulb upgrade option is used with either The Manhattan or The Metropolitan, the antique bulb filament image is not visible on either model's green glass reflectors.

Order additional antique bulbs as spares, or for other special lighting fixture applications in your home. Not for use with dimmers or in 3-way sockets.

More Questions? Call us at 1-800-731-6229

How To Order

If you need advice or just want to have us walk you through the process, call us at 1-800-731-6229. We're open weekdays between 8 AM and 5 PM Eastern time.

ORDERING: Order forms can be faxed to (570) 489-4643. Order forms are also available on our website at www.ClassicMeters.com (click on "Price List and Order Form" on the home page) and fax to us. We can also fax one to you. Of course, you can always mail your order to us as well.

Mail to: Arcman Corporation
807 Center Street
Throop PA 18512-1124

Email is another option. Jim@ClassicMeters.com

PAYMENT: You may pay by check, money order, or charge card. We accept MasterCard, Visa, or American Express. All payments must be in US funds. We do not ship COD. If prepayment via check or money order is an overpayment we will automatically issue a refund.

SALES TAX: Pennsylvania residents please add 6% sales tax on all goods purchased, including delivery charges. Pennsylvania tax-exempt orders must include tax waiver documentation if not already on file with us. Out-of-state customers pay no tax unless goods are received or delivered in Pennsylvania.

OPEN ACCOUNT: Open accounts are available to electric utilities and cooperatives, well-known institutions, organizations with Dun & Bradstreet ratings of "Good" or higher, federal, state, and local governments, and to firms having a credit history with us. Terms are net 30 days.

IN A HURRY? Call us weekdays between 8 AM and 5 PM Eastern time or fax or email us for product availability, lead time, and expedited delivery options and costs.

SHIPPING: We normally ship UPS to the contiguous 48 states and Canada, and USPS Priority Air elsewhere. Please refer to the order form's shipping rate chart. Rates are for UPS ground delivery of one product to the contiguous 48 states. Shipments exceeding 200 lbs. qualify for freight discounts. Please inquire about these special rates.

QUANTITY DISCOUNTS: Please refer to the order form's quantity discount chart. Different products may be mixed to reach an eligible quantity. Power Plaques are not subject to quantity discounts. Upon customer request, we can postpone or segmentize delivery on a quantity order, but only one billing/payment cycle is allowed.

DROP SHIPMENTS: Direct deliveries to recipients can be arranged at no extra charge.

RETURN GOODS: Return goods must be carefully packed and insured, preferably in the original cartons.



Engraving

All OB-series restorations include a pre-engraved, wedge-mounted brass inscription plate pre-installed below the meter which reads:

RESIDENTIAL
ELECTRIC METER
CIRCA 1920

Customers may request an additional, larger, personalized brass plate affixed to the front vertical portion of the walnut base as shown in our illustrations. The script style is double-line Roman, and the size of this plate is 4" x 1". There is no charge for this service. Customers preferring to do their own engraving can order free blank plates installed. All brass plates are installed with small screws to facilitate exchanges.

Suggested formats:

Presented to (or) Specially Crafted for
JOHN P. JONES
In Recognition of 6 Years of Dedicated Service
– Consolidated Edison Company –
2002-2008 (or) m-d-y to m-d-y

or

SPECIALLY CRAFTED
FOR
JOHN P. JONES
– 2007 –

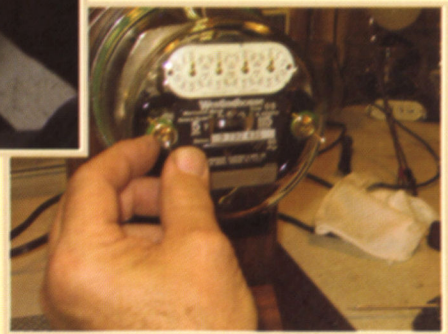
Please print or type engraving instructions on a separate sheet, identified for each product ordered. Please note we have a 5-line capacity, with a linear capacity per line of 55 characters and spaces.

Engraved logos, both stock and custom, are available at a one-time charge. Please call us at 1-800-731-6229 for additional information.

1-800-731-6229



Each piece is individually signed by the skilled craftsman who created it.



We take great pride in our products!



Your meter is meticulously hand-restored beyond its original luster



Our Warranty

The Arcman corporation hereby warrants total customer satisfaction with its products. Within a 30-day period following delivery the original purchaser may request and receive a full, unquestioned refund, repair or like replacement, with said refund to include customer's total shipping and insurance costs for normal ground shipment both ways, if applicable.

Our products are additionally guaranteed against defects in materials, workmanship, and operation for a one-year period following delivery. Within this period, the Arcman Corporation, 807 Center Street, Throop, Pennsylvania, 18512, will repair or replace defective products at no charge to the purchaser for parts, labor, or our return shipping expense. This warranty extends to both the original purchaser and to subsequent owners.

At the purchaser's option, the Arcman Corporation will arrange to have returned merchandise picked up at the purchaser's location, at no cost to the purchaser, provided said merchandise is pre-packed for shipment. This offer is void beyond the 48 contiguous states.

Customers may order personalized engraving with confidence, as personally-engraved items are subject to full warranty terms.

Any product which, in our judgement, shows evidence of having been altered, modified, or tampered with will be ineligible for any warranty claim. Any product showing evidence of an electrical overload or other electrical abuse caused by the use of improper current, receptacle adaptors, or circuit modifications will also be ineligible for any warranty claim.

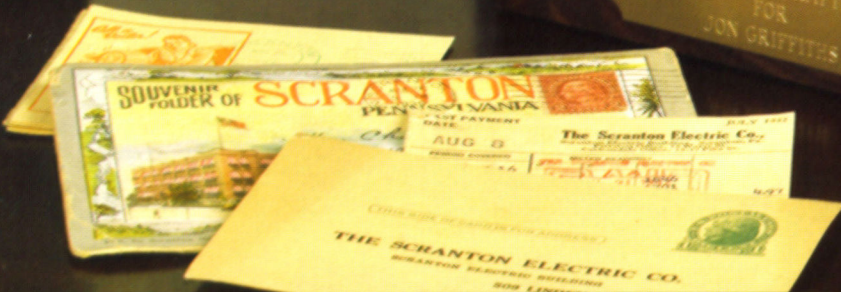
This warranty does not cover damage caused by accident, acts of God, or failure to follow instructions supplied with the product.

Arcman Corporation
807 Center Street
Throop PA 18512-1124

Arcman
guarantees their
products **100%**
Or your money back!



Bringing the past to light



'Scranton, the Electric City' a customized version of the Fifth Avenue Medallion series shown above.

What can we create for you?

1-800-731-6229